



**COMPANY**

**HISTORY**

**FINGER-JOINTED  
CONSTRUCTION  
TIMBER**

**DUO/TRIO  
TIMBERS**

**LOG HOUSE**

**BEAM**

**CARPORTS**

**MISSION  
STATEMENT**



**ABIES**



Austria  
**Holzverarbeitung GmbH**

## COMPANY



# ABIES:

## Leading company for KVH

In the last two decades, ABIES Austria has established itself as one of the leading manufacturers of solid structural timber in Europe.

The company was founded by Günter Hessenberger and Ing. Andreas Maxwald in 2006. The years of experience in the sawing industry was the founding pillar for a successful start in the industry. To this day, the

focus is on the precise production of high-quality solid structural timber.

Now, there are already 60 employees working on executing the orders of our partners to their full satisfaction.

### Did you know...?

The name "ABIES" is derived from the botanical name for spruce (*Picea Abies*) and fir (*Abies Alba*).



We  
**CONTINUE**  
to  
grow



## HISTORY

**2006** **Company founding**  
ABIES Austria  
Holzverarbeitung GmbH

**2008** ABIES Austria invests in  
**export** to Europe

**2010** Annual turnover exceeds  
15 million for the first time

**2011** **Opening of the specialist  
wood market** in Oberweis for  
private customers

**2012** Expansion of dry  
capacity with two new  
chambers

**2013** **Launch of the webshop**  
Annual turnover exceeds  
20 million

**2014** **Foundation of sales  
branch in Poland**  
Annual turnover exceeds  
25 million

**2016** Construction of two more  
drying chambers

**2018** Installation of a new **CNC  
beam machine** and a **press  
for the DUO timber  
production**

**2021** Installation of a **new finger-  
joint production machine**



# FINGER-JOINTED CONSTRUCTION TIMBER:

## Bulk producer with list expertise

Our solid structural timber is an innovative, quality-controlled product with clearly defined properties.

Our company produces **finger-jointed and dried solid wood product** made of coniferous timber. At our plant, spruce wood and spruce/fir wood are used as standard; pine is also possible on request. The wood is technically dried, sorted and finger-joint-

ed. Our production process is subject to constant external monitoring. Our product is cut, dried, sorted, glued, planed and packaged ready-to-use.

ABIES Austria stands for high quality and reliability.

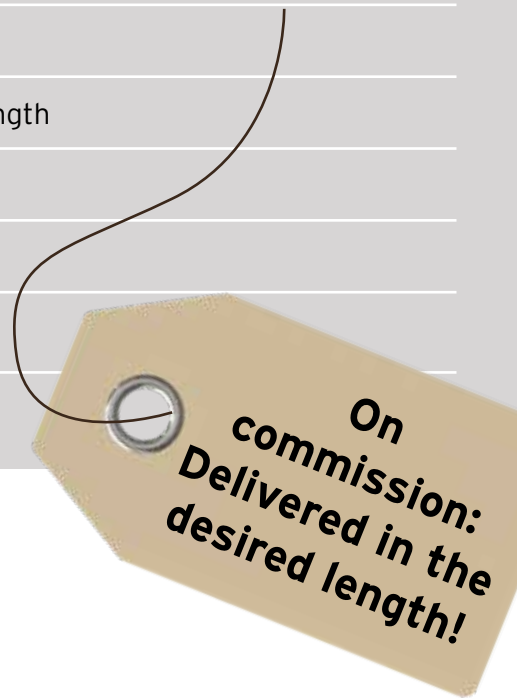
### Did you know...?

You can view the currently available dimensions online in our ABIES ORDERMAN. Test it now at [www.abies-austria.at](http://www.abies-austria.at)!



# THE MOST IMPORTANT FACTS AT A GLANCE

Wood species:	spruce, spruce/fir, pine on request
Lengths:	2-16 m, standard 13 m, delivered by the piece
Quality:	NON-EXPOSED, EXPOSED on request
Wood moisture:	15% +/- 3%
Strength:	according to DIN EN 15497, DIN 4074 sorted by strength
Surface:	4-sided planed and chamfered
Gluing:	1-K-PUR, glue type I according to EN 15425
Packaging:	laminated and labelled
Shipping:	full loads by lorry small quantities depending on the zone



## Applications:

- Rafters and roof beams for roof constructions
- Carports and garden sheds
- Wood frame construction/wooden house construction
- Porch roofs
- Pergolas

piece / package

KVH C24	Width Thickness	80	100	120	140	160	180	200	220	240	260	280	300
	60	98	77	63	56	49	42	35	35	28	28	28	21
80	70	55	45	40	35	30	25	25	20	20	20	15	
100		44	36	32	28	24	20	20	16	16	16	12	
120			27	24	21	18	20	15	15	12	12		
140				24	21	18	15	15	12	12	12		
160					14		12		10				

KVH special		80	100	120	145	150	180	200	220	240
	45									
	50									
	70									

available  
Standard length: 13 m  
up to 16 m on request

## DUO/TRIO TIMBERS



## DUO/TRIO:

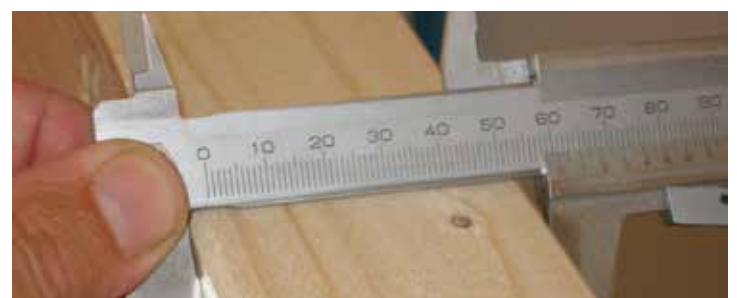
Dimensionally stable  
in maximum precision

Due to the **technical drying and the gluing of two to three wooden lamellae**, the high-quality DUO/TRIO timbers offer a new dimensional stability. At the same time, the solid wood character remains intact thanks to the few joints. Thanks to the finger jointing, lengths

of up to 16 m are possible. Due to the good properties with dimensional stability, the low wood moisture as well as the appearance, the use of DUO/TRIO timbers is becoming increasingly popular, especially in residential construction.

### Did you know...?

DUO/TRIO is the top product for modern wooden frame construction.



# THE MOST IMPORTANT FACTS AT A GLANCE

Wood species:	spruce/fir
Lengths:	from 2-16 m, by package
Quality:	industrial quality
Wood moisture:	15% +/- 3%
Strength:	GL24h, C24
Surface:	4-sided planed and chamfered
Gluing:	2-K MUF (separate application), glue type I according to EN 15425
Packaging:	laminated and labelled, by package
Shipping:	full loads by lorry, small quantities depending on the zone

**DUO/TRIO:**  
Delivered in the  
desired length,  
by package!

## Applications:

- Rafters and roof beams for roof constructions
- Carports and garden sheds
- Wood frame construction/wooden house construction
- Porch roofs
- Pergolas

		80	100	120	140	160	180	200	220	240	260	280	300
DUO GL24h	60		■	■	■	■	■	■	■	■			
	80	■	■	■	■	■	■	■	■	■			
	100					■		■		■			
DUO C24	120			■	■	■	■	■	■	■	■	■	■
	140				■					■			
	160					■	■	■	■	■	■	■	■
	180						■	■	■	■	■	■	■
TRIO C24	240							■	■	■	■	■	
	200							■	■	■			
BSH GL24h	200												

■ available    ■ on request

Standard length: 13 m

## LOG HOUSE

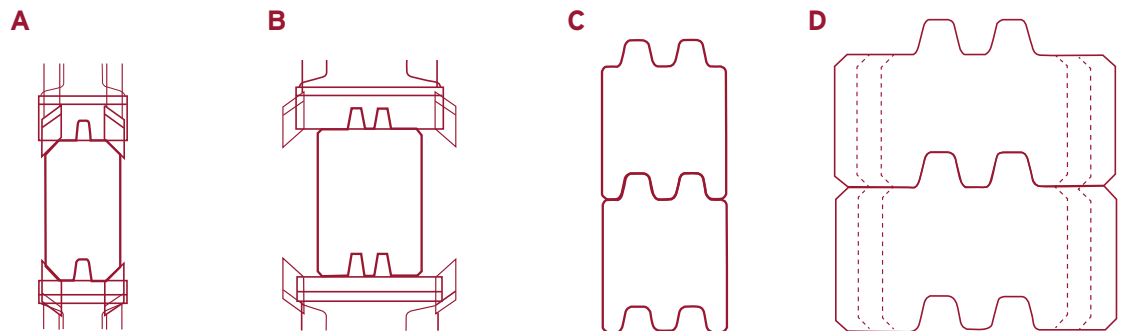


# LOG HOUSE

## profile

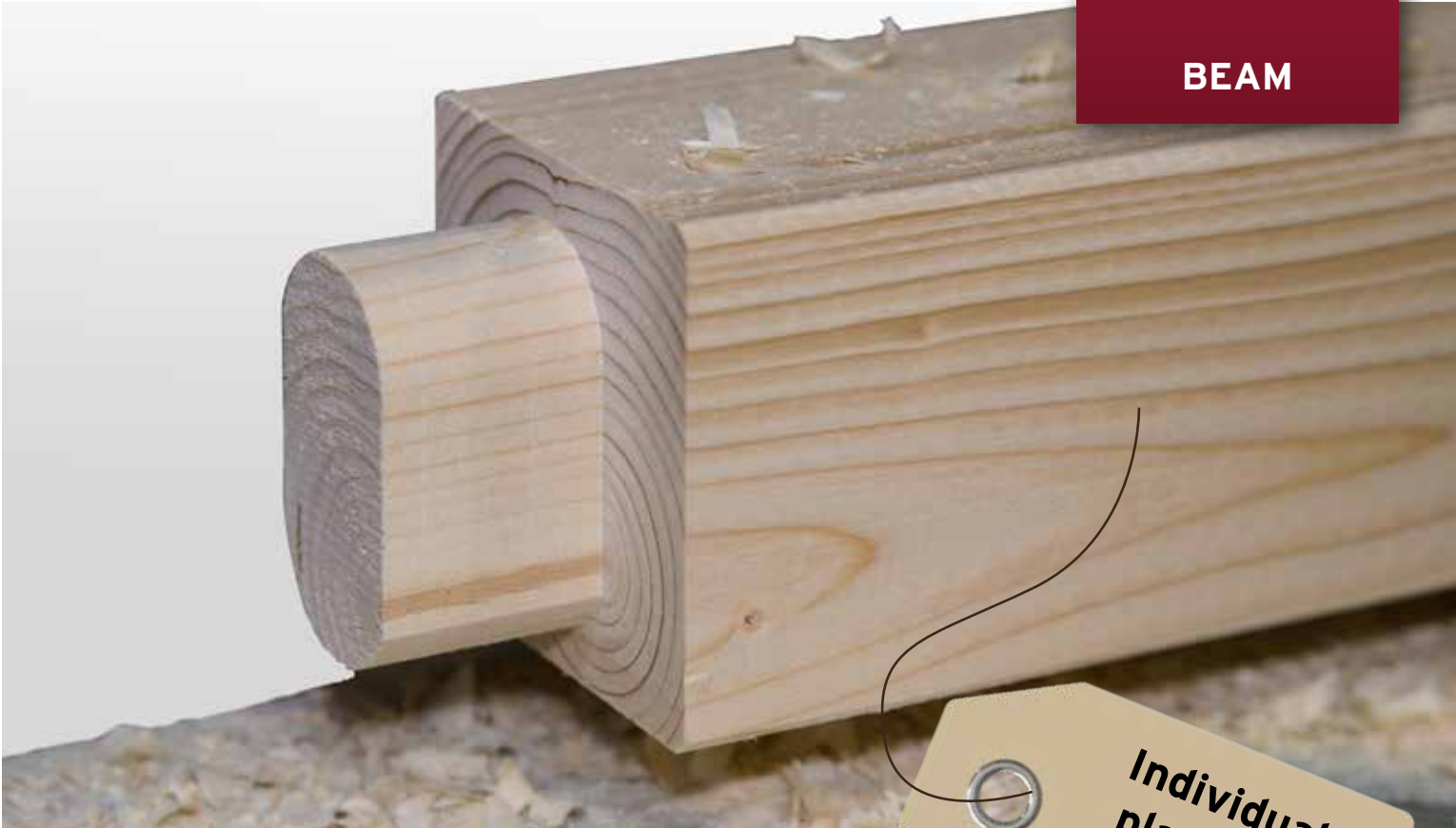
Both finger-jointed construction timber and DUO/TRIO timbers can be equipped with a log house profile. Log house profiles are outstandingly suitable for modern log houses and garden sheds. Flexibility in design is offered with various thicknesses and widths.

Both finger-jointed construction timber and DUO/TRIO timbers can be equipped with a log house profile. Log house profiles are outstandingly suitable for modern log houses and garden sheds. Flexibility in design is offered with various thicknesses and widths.



	A	B	C	D
Thickness	40 mm	50 mm	60 mm	80 / 100 / 120 mm
Widths/height	120 / 160 mm		120-240 mm	
Covering dimension	- 10 mm		- 12 mm	- 15 mm
Lengths	2.5 m to 16 m			
Qualities	both sides EXPOSED / one side EXPOSED / both sides NON-EXPOSED			





# CNC BEAM:

## Precise cutting

With the modern beam system, complex components can be produced precisely and exactly according to your specifications.

After the plan drawing and quote presentation, the components are cut to the millimetre. Optimum flexibility, quality and deadline reliability are offered.

*Individual  
planning:  
We bring your  
idea onto paper!*



Beam system:	Hundegger K2i
Data preparation:	SEMA, Dietrich's, S + S
Wooden components:	maximum length: 18 m maximum height: 300 mm maximum width: 625 mm
Packaging:	laminated and labelled with component inscription
Shipping:	lorry

## CARPORT



# CARPORT:

## Customised building set

**Order customised garden sheds now as well!**

Our beam team plans carports individually according to your wishes.

We deliver a building set consisting of solid structural timber and, if necessary, glued-laminated timber spruce. The components are ready bound and only need to be composed and screwed together accord-

ing to the component plan. The mortise joints ensure simple and fast construction.

The carport is delivered with roof panelling as well as spruce or larch wood wall cladding on request.

Roof form:	saddle roof, pitch roof
Size:	single carport, double carport
Wood:	finger-jointed construction timber in spruce, BSH spruce
Roof incline:	5° pitch roof; 25° saddle roof or on request
Snow load:	400 kg/m <sup>2</sup>
Column cross-section:	approx. 140/140 mm (single carport), approx. 160/160 mm (double carport)



# **SPECIALIST WOOD MARKET** for private customers

Since 2011, our team in Oberweis has offered ex works sales for private customers.

In addition to solid structural timber and DUO/TRIO, lumber and planed goods in spruce and larch as well as a garden range are offered. Since recently, indi-

vidually tailored panels have also been available in Oberweis. Competent specialist consulting from specialist personnel is a given. With the ABIES specialist wood market, you have the perfect wood partner for house and garden near you!





# Construction MATERIAL **WOOD**



We process a natural product. Therefore, we place maximum value on preserving the ecological system for the future as well.

Here, **short channels in procurement logistics** are a given. Our raw materials come from sustainably managed forests (PEFC certificate) and the use of formaldehyde-free glues is mandatory.

A core aspect for the protection of the environment

is our **wood drying with exhaust heat**, which comes from the nearby Laakirchen factory.

Another project that has already been implemented: Since 2015, a **photovoltaic system** with 440 MWp has been installed on the ABIES roof, supplying our plant with ecological power.



## **ABIES Austria Holzverarbeitung GmbH**

4664 Oberweis, No. 401  
Austria  
Tel. +43 (0) 7612 / 63 777  
abies@abies-austria.at  
www.abies-austria.at



## **ABIES Polska sp. z o.o.**

ul. Romualda Traugutta 97, 44-370 Pszow  
Poland  
Tel. (+48) 32 / 720 28 19  
biuro@abies-polska.pl  
www.abies-polska.pl